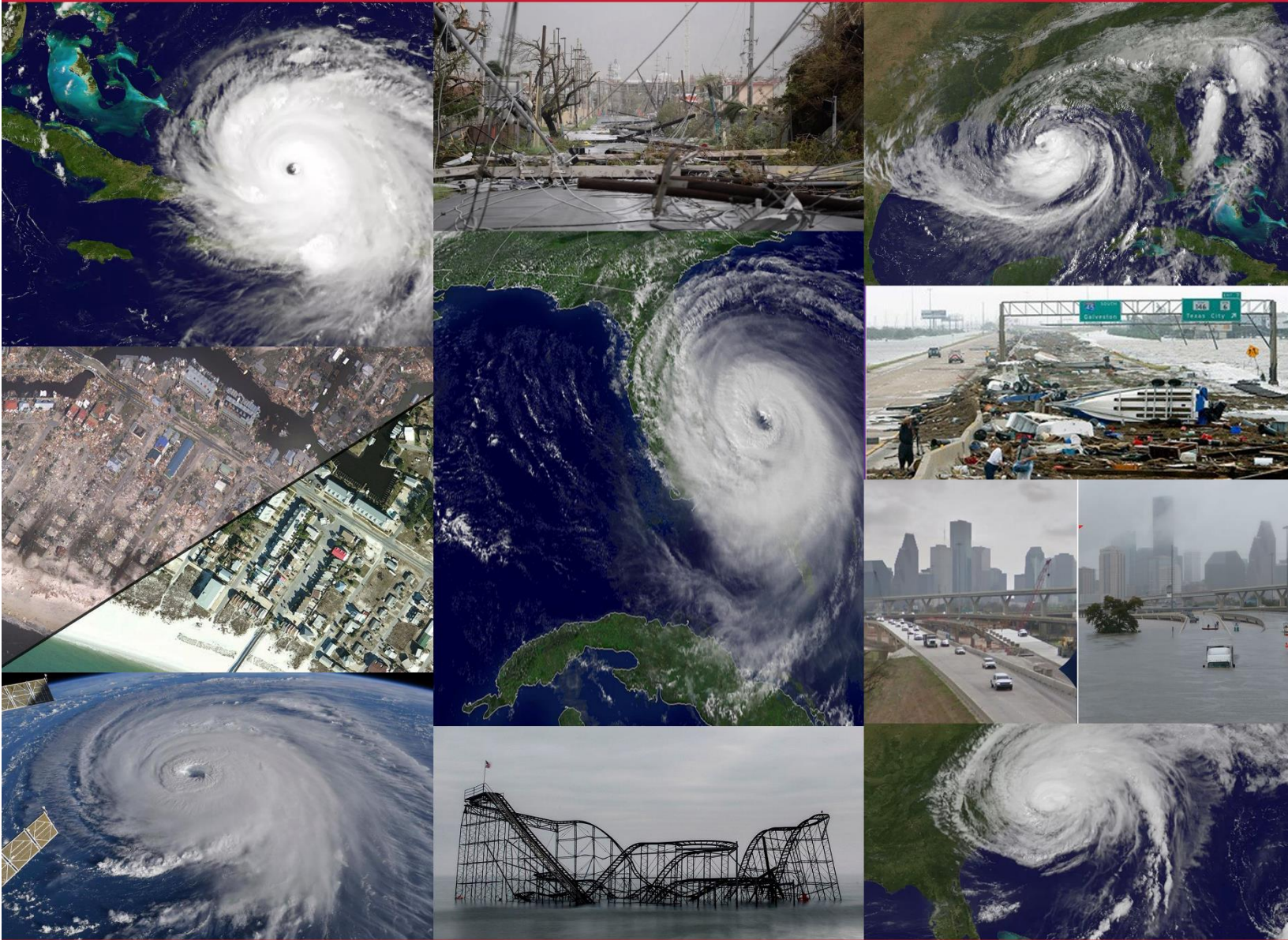


# Hurricane Preparedness Guide

SPECIAL ALERT: COVID-19 Information Included



Don't Wait  Until It's Too Late



**ASL SERVICES** INC.  
DEDICATED TO COMMUNITY • Int'l HQ: KISSIMMEE, FL

Prepared & Shared By: ASL Services, Inc.

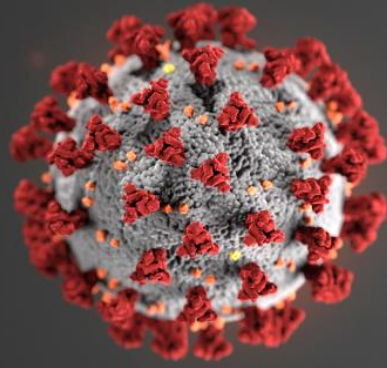
# Are You Really Prepared for Hurricane Season?

Click the Link to View This Guide in ASL – <https://youtu.be/gF8J5iBDtV0>

## Table of Contents

COVID-19 ALERT .....	3
Personal Safety During the COVID-19 Pandemic .....	3
Important Information About Wind Speeds & Warnings.....	4
Knowing the difference between a Hurricane/Tropical Storm Advisory, Watch & Warning.....	4
Tropical Storms & Hurricane Wind Speeds/Possible Damage .....	4
Know What To Do As Hurricane Is Approaching (ready.gov/hurricanes) .....	5
What To Do NOW: Prepare .....	5
What to do: When a Hurricane is 36 hours from arriving.....	5
What To Do: When a Hurricane is 18-36 hours from arriving .....	6
What To Do: When a Hurricane is 6-18 hours from arriving.....	6
What To Do: When a Hurricane is 6 hours from arriving .....	6
What To Do During: Survive .....	7
What To Do After: Be Safe .....	7
Getting Yourself Prepared Checklist.....	8
Have You Made a Family Emergency Plan?.....	8
Preparing A 'To Go' Bag .....	8
Updating Your Insurance/Checking Your Insurance .....	9
Home Inventory.....	9
Outside Your Home .....	9
Check Ahead with Map for Local Shelters .....	10
Hurricane Supplies.....	10
Basic Supplies .....	10
Personal.....	10
Elements.....	11
Clothing.....	11
Specific Items for Children/Elderly.....	11
Pets .....	11
Be Prepared Should You Ride Out the Storm or ordered to be Evacuated.....	12
During Hurricane Watch .....	12
During Hurricane Warning (checklist) .....	12
What to do During a Tornado? .....	12
Safety Resources and Links .....	13
TEXT OR DOWNLOADS to help find shelter & get alerts.....	13
National Hurricane Links (weather/preparing).....	13
Information for Where You Live.....	13
Weather Stations/New Stations .....	14





# COVID-19 ALERT

## Personal Safety During the COVID-19 Pandemic

It is predicted that we will experience an above-average Atlantic hurricane season. With the COVID-19 pandemic, it will be especially important to be prepared, have supplies on hand, make a family emergency plan, prepare your home and have complete information on evacuating and shelter options.

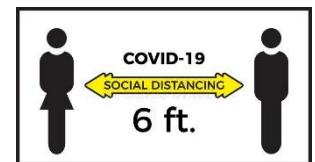
Counties are making special arrangements for shelters such as expanding more locations due to COVID-19. Go to the American Red Cross Shelter Finder <https://www.redcross.org/get-help/disaster-relief-and-recovery-services/find-an-open-shelter.html> or refer to section "Information for Where You Live" for the most current shelter information. If you must go to a community or group shelter, remember to follow the latest guidelines for the Centers for Disease Control and Prevention (CDC) for protecting yourself and family from COVID-19. CDC guidance on COVID-19 during a hurricane can be found at: <https://www.cdc.gov/disasters/hurricanes/covid-19/prepare-for-hurricane.html>



Be prepared to take cleaning items with you like soap, hand sanitizer, disinfecting wipes, or general household cleaning supplies to disinfect surfaces you may need to touch regularly.



Maintain at least 6 feet between you and persons not part of your immediate family while at the shelter [by avoiding crowds or gathering in groups] as much as possible.



Anyone over 2 years old should use a cloth face covering while at these facilities.



To view the 'COVID-19 Pandemic Operational Guidance for the 2020 Hurricane Season' by FEMA, visit: [https://www.fema.gov/media-library-data/1589997234798-adb5ce5cb98a7a89e3e1800becf0eb65/2020\\_Hurricane\\_Pandemic\\_Plan.pdf](https://www.fema.gov/media-library-data/1589997234798-adb5ce5cb98a7a89e3e1800becf0eb65/2020_Hurricane_Pandemic_Plan.pdf)

# Important Information About Wind Speeds & Warnings

## Knowing the difference between a Hurricane/Tropical Storm Advisory, Watch & Warning

\*Source National Weather Service – [www.weather.gov](http://www.weather.gov)



**Tropical Storm or Hurricane Advisory** - The NWS issues an Advisory when it expects conditions to cause significant inconveniences that may be hazardous. If caution is used, these situations should not be life-threatening.



**Tropical Storm or Hurricane Watch** - The NWS issues a Watch when a tropical storm or hurricane is possible within 48 hours. Tune in to NOAA Weather Radio All Hazards, local radio, TV, or other news sources for more information. Monitor alerts, check your emergency supplies, and gather any items you may need if you lose power.



**Tropical Storm or Hurricane Warning** - The NWS issues a Warning when it expects a tropical storm or hurricane within 36 hours. During a Warning, complete your storm preparations, and immediately leave the threatened area if directed to do so by local officials.

## Tropical Storms & Hurricane Wind Speeds/Possible Damage

### Tropical Storm: Winds 39-79 mph

**Wind Effects:** Scattered trees down, scattered power outages, some roads blocked due to downed trees and power lines. For example, neighborhoods could lose power for several days.

## SAFFIR/SIMPSON HURRICANE SCALE

### Category 1: Winds 74-95 mph

**Wind Effects:** Damage to mobile homes and homes of frame construction. Numerous trees down and widespread power outages. Road blocked due to downed trees and power lines. Loose outdoor items will become airborne projectiles. For example, an area as large as a county could experience near total power loss.

### Category 2: Winds 96-110 mph

**Wind Effects:** Severe damage to the majority of mobile homes and homes of frame construction. Many trees down. Well-constructed homes will have damage to shingles, siding and gutters. Extensive damage to power lines and widespread power outages. Airborne debris could injure or kill. Damage could extend well inland. For example, multiple localities could experience near total loss of power and water for several days.

### Category 3: Winds 111-130 mph

**Wind Effects:** Nearly all mobile homes destroyed. Severe damage to most homes, including structural collapse. Airborne debris will injure or kill. Severe damage to most low-rise apartment buildings with partial roof and wall failure. Damage could extend well inland. For example, large portions of the affected area could experience total power and water loss for more than a week.

### Category 4: Winds 131-155 mph

**Wind Effects:** Catastrophic damage to residential structures. Most of the affected area will be uninhabitable for weeks or longer. Nearly all industrial buildings and low-rise apartment building severely damaged or destroyed. Nearly all trees and power poles downed. Damage could extend well inland. For example, large portions of the affected area will experience total power and water loss for weeks and possibly months.

### Category 5: Winds 156+ mph

**Wind Effects:** Similar to Category 4.

Please visit the YouTube Link to the Weather Channels video to show the potential damage that comes along with hurricane wind speeds: <https://www.youtube.com/watch?v=lqfExHpvLRY>

## What To Do NOW: Prepare

- Know your area's risk of hurricanes.
- Sign up for your [community's warning system](#). The Emergency Alert System (EAS) and National Oceanic and Atmospheric Administration (NOAA) Weather Radio also provide emergency alerts.
- If you are at risk for flash flooding, watch for warning signs such as heavy rain.
- Practice going to a safe shelter for high winds, such as a FEMA safe room or ICC 500 storm shelter. The next best protection is a small, interior, windowless room in a sturdy building on the lowest level that is not subject to flooding.
- Based on your location and community plans, make your own plans for evacuation or sheltering in place.
- Become familiar with your evacuation zone, the evacuation route, and shelter locations.
- Gather needed supplies for at least three days. Keep in mind each person's specific needs, including medication. Don't forget the needs of pets.
- Keep important documents in a safe place or create password-protected digital copies.
- Protect your property. Declutter drains and gutters. Install check valves in plumbing to prevent backups. Consider hurricane shutters. Review insurance policies.

## What to do: When a Hurricane is 36 hours from arriving



Turn on your TV or radio in order to get the latest weather updates and emergency instructions.



Restock your emergency preparedness kit. Include food and water sufficient for at least three days, medications, a flashlight, batteries, cash, and first aid supplies.



Plan how to communicate with family members if you lose power. For example, you can call, text, email or use social media. Remember that during disasters, sending text messages is usually reliable and faster than making phone calls because phone lines are often overloaded.



Review your evacuation zone, evacuation route and shelter locations. Plan with your family. You may have to leave quickly so plan ahead.



Keep your car in good working condition and keep the gas tank full; stock your vehicle with emergency supplies and a change of clothes.



## What To Do: When a Hurricane is 18-36 hours from arriving



Bookmark your city or county website for quick access to storm updates and emergency instructions.



Bring loose, lightweight objects inside that could become projectiles in high winds (e.g., patio furniture, garbage cans); anchor objects that would be unsafe to bring inside (e.g., propane tanks); and trim or remove trees close enough to fall on the building.



Cover all of your home's windows. Permanent storm shutters offer the best protection for windows. A second option is to board up windows with 5/8" exterior grade or marine plywood, cut to fit and ready to install.

## What To Do: When a Hurricane is 6-18 hours from arriving



Turn on your TV/radio or check your city/county website every 30 minutes in order to get the latest weather updates and emergency instructions.



Charge your cell phone now so you will have a full battery in case you lose power.

## What To Do: When a Hurricane is 6 hours from arriving



If you're not in an area that is recommended for evacuation, plan to stay at home or where you are and let friends and family know where you are.



Close storm shutters and stay away from windows. Flying glass from broken windows could injure you.



Turn your refrigerator or freezer to the coldest setting and open only when necessary. If you lose power, food will last longer. Keep a thermometer in the refrigerator to be able to check the food temperature when the power is restored.



Turn on your TV/radio or check your city/county website every 30 minutes in order to get the latest weather updates and emergency instructions.



## What To Do During: Survive



If told to evacuate, do so immediately. Do not drive around barricades.



If sheltering during high winds, go to a FEMA safe room, ICC 500 storm shelter, or a small, interior, windowless room or hallway on the lowest floor that is not subject to flooding.



If trapped in a building by flooding, go to the highest level of the building. Do not climb into a closed attic. You may become trapped by rising flood water.



Listen for current emergency information and instructions.



Use a generator or other gasoline-powered machinery outdoors ONLY and away from windows.



Do not walk, swim, or drive through flood waters. Turn Around. Don't Drown! Just six inches of fast-moving water can knock you down, and one foot of moving water can sweep your vehicle away.

Stay off of bridges over fast-moving water.

## What To Do After: Be Safe

Listen to authorities for information and special instructions.

Be careful during clean-up. Wear protective clothing and work with someone else.

Do not touch electrical equipment if it is wet or if you are standing in water. If it is safe to do so, turn off electricity at the main breaker or fuse box to prevent electric shock.

Avoid wading in flood water, which can contain dangerous debris. Underground or downed power lines can also electrically charge the water.

Save phone calls for emergencies. Phone systems are often down or busy after a disaster. Use text messages or social media to communicate with family and friends.

Document any property damage with photographs. Contact your insurance company for assistance.



# Getting Yourself Prepared Checklist

## Have You Made a Family Emergency Plan?

- ☐ Reviewed/Wrote down your Family Emergency Plan?
- ☐ Set up an out of state family contact in case family gets separated?
- ☐ Determined a meeting location at least 50 miles inland in case family gets separated?
- ☐ Exchanged with neighbor or close friend(s) phone numbers (with Family ER Name/Contact list)?
- ☐ Taken pictures of your house and/or contents within your house/apartment with date taken?
- ☐ Created a "To Go Bag" containing your important documents/identifications?



## Preparing A 'To Go' Bag

A "To Go" Bag is essential whether you decide to ride out the storm or evacuate. Below is an example of items to place in a zip lock bag or some other waterproof container.

- ☐ Blood type information/No Blood Card
- ☐ Medical Insurance Card/Medical Doctor Information
- ☐ List of Medical Prescription(s)/RX information with names/dosages
- ☐ Cash
- ☐ Credit Cards (in event ATMS are down or emptied out)
- ☐ Personal Checkbook
- ☐ Unpaid Bills
- ☐ Pens/Paper
- ☐ Insurance Papers (home, rent, health, etc.)
- ☐ Passport
- ☐ Birth Certificate
- ☐ Driver's License (copy)
- ☐ Social Security Card
- ☐ Proof of residence (deed, lease, mortgage, utility bill)
- ☐ Copy of Living Will, Power of Attorney, Deeds, Copies of recent tax returns)
- ☐ Stocks
- ☐ Photos/Pictures/Sentimental Items
- ☐ Hard copy or printed maps





## Updating Your Insurance/Checking Your Insurance

- ☐ Check your home and car insurance policy for coverage
- ☐ Up to date for your house?
- ☐ Any work/upgrades done to home? Did you update value to insurance policy?
- ☐ Do you have additional expenses if house is not inhabitable due to covered loss?
- ☐ Do you have Flood Insurance? (Typically, a separate policy from home insurance and there is a 30-day waiting period so cannot buy last minute) Did you know: Flooding is the leading cause of damage from tropical systems.
- ☐ Do you have Sinkhole coverage in your policy?
- ☐ Do you have a Comprehensive Car Coverage policy? (Collision will not cover a falling tree on car)



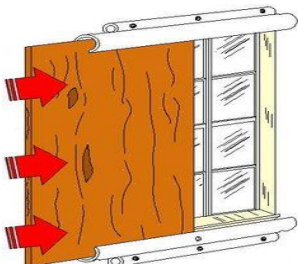
## Home Inventory

- ☐ Video your home and contents. It is easy to narrate as you video.
- ☐ Take pictures of your home and contents
- ☐ Include make and model numbers of specific items in video or picture(s)
- ☐ Check your insurance. They may require you to register your video or picture prior to hurricane or may have software/program to use for inventory.
- ☐ Remember to inventory contents of closets, drawer, cabinets, etc.
- ☐ Store video, pictures, inventory in a safe place.
- ☐ Have a back-up of your video, pictures, inventory in a different location.
- ☐ Keep all receipts especially for big/expensive items (some items might need separate coverage)
- ☐ Keep track of model numbers and where purchased.



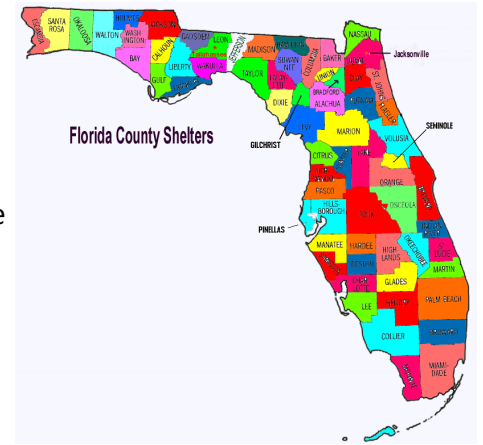
## Outside Your Home

- ☐ Cut/remove/haul away any dead limbs, old trees, bushes, etc.
- ☐ Check/maintenance of generator
- ☐ Check your Inverter (car power charger – note this uses minimal fuel from car and runs refrigerator, lights, etc.)
- ☐ Install anchors and pre-drill holes for the plywood
- ☐ Obtain ¾ inch width outdoor plywood for each window
- ☐ Install head and foot bolts for extra protection to cover windows
- ☐ Purchase tarp for roof (you will need hammer and nails)



## Check Ahead with Map for Local Shelters

- ☐ Keep in mind some shelters might have changed or might not open
  - ☐ Know where various locations are which have services for persons with disabilities or that are pet friendly.
- In case you are ordered to evacuate, learn Evacuations Routes in case of traveling roads that you are not familiar with and/or road construction/detours.
- ☐ Have a prearranged ride in place.



## Hurricane Supplies

Begin stocking up prior to hurricane season. Buy a few items weekly.

## Basic Supplies

- ☐ Food Packs (2 weeks supply for every family member/pet in house; 3 days for travel)
  - ☐ Water
  - ☐ Snacks
  - ☐ Utensils
  - ☐ Manual can opener
  - ☐ Water purifier
  - ☐ Toilet Paper
  - ☐ Paper Towels
  - ☐ Sanitizer
  - ☐ Bleach/Cleansers



## Personal

- ☐ Personal/Sentimental/Religious Items
- ☐ Toothbrush
- ☐ Toothpaste
- ☐ Jewelry
- ☐ Extra eyeglasses/contacts
- ☐ Heart defibrillator
- ☐ Asthma machine/refill
- ☐ Female Sanitation Napkins



## Elements

- ☐ First Aid Kit (Alcohol, Bug Bite Pen)
- ☐ AM/FM Radio/Weather Alert (hand crank radio)
- ☐ Cell Phone/Car Chargers/Backup battery chargers
- ☐ Flashlight
- ☐ Batteries
- ☐ Extension Cords
- ☐ Extra Keys (car and house)
- ☐ Jumper cables
- ☐ Bug-Mosquito Repellant Spray/Citronella Candles
- ☐ Mosquito Net
- ☐ Waders/Raft
- ☐ Blanket(s), Pillow(s) and Sleeping bags (one for each family member)
- ☐ Permanent Marker
- ☐ Small battery-operated fans
- ☐ Small travel pocket tool set
- ☐ 2 Coolers (One for food/One for ice)
- ☐ Trash Bags
- ☐ Purchase Quick Dam Bags. Function just like a sand bag. They stay flat until water hits them then swell up to keep water out. Come in lengths as long as a garage door.



## Clothing

- ☐ Extra Socks (Maintain feet sanitized/dry)
- ☐ Comfortable clothing (pants, tops, shirts, undergarments, etc.)
- ☐ Solid shoes (sneakers, hiking boots)
- ☐ Rain Gear (Rain boots, Rain Jacket, etc.)



## Specific Items for Children/Elderly

- ☐ Diapers/Depends
- ☐ Baby formula/Ensure/Boost
- ☐ Sturdy Shoes
- ☐ Toys/Coloring books/crayons/pencils
- ☐ Playing cards/quiet games



## Pets

- ☐ Dog/Cat food
- ☐ Water/Food bowls
- ☐ Pet medications/dosages with Vet Name, Number and location
- ☐ Plan if hotel or shelter won't allow pets





# Be Prepared Should You Ride Out the Storm or ordered to be Evacuated

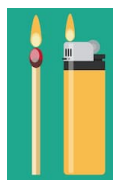
## During Hurricane Watch

- ☐ Have all 'To Go Bag(s)' items ready and accessible in one location for fast 'Grab & Go'
- ☐ Medicines/Refill Early (No less than one week's worth)
- ☐ Get cars filled with gas right away



## During Hurricane Warning (checklist)

- ☐ Generators (Gas/Oil/Extension Cords)
- ☐ Fill anything you can with water (including bathtub, garbage cans for use/flushing toilet)
- ☐ Freeze bottles of water for ice
- ☐ Get ice and store in freezer or cooler
- ☐ Grill: Charcoal, Matches/Lighter, Lighter Fluid
- ☐ Unplug electrical items
- ☐ Bring in all outside items (lawn chairs, planters, decorations, trash cans, hanging plants, anything wind can pick-up)
- ☐ Secure and anchor items that can't be brought inside (some items can be dumped into pool)
- ☐ Towels to stuff door to divert water from coming in
- ☐ Quick Dam Bags for water intrusion
- ☐ Lift items in home as high as possible off the ground that can get soaked or damaged from water intrusion.
- ☐ If you didn't board up your windows – you can put a mattress in front of them on the inside of your house to protect from loss if blowout.
- ☐ Remove items like lamps and other objects off the tables and put them in a closet so they will not blow around should wind come inside the house.



## What to do During a Tornado?

- Move to a safe area in your home immediately. Safe area is usually a basement or most interior room with no windows.
- Use pots to function as a 'helmet' to protect your head.



### TEXT OR DOWNLOADS to help find shelter & get alerts

#### Need to find shelter?

- Visit <https://www.redcross.org/get-help/disaster-relief-and-recovery-services/find-an-open-shelter.html> to find open American Red Cross Shelters in your area.

#### Can't download the App to find a shelter?

- Text SHELTER + your ZIP Code to 43362 (4FEMA) to find the nearest shelter in your area.

#### Want to Monitor Severe Weather from your phone?

- Emergencies – TEXT "GETEMERGENCY" to 90999
- Tornado's – TEXT "GETNADO" to 90999
- Hurricane's – TEXT "GETCANE" to 90999
- Flooding – TEXT "GETFLOOD" to 90999



### National Hurricane Links (weather/preparing)

- FEMA – Important Things to Know Before A Disaster: <https://www.youtube.com/watch?v=0zCl5MuiOu4>
- NOAA - <http://www.noaa.gov/>
- Ready.Gov - <https://www.ready.gov/hurricanes>
- American Red Cross Disaster and Financial Planning Guide: <https://www.redcross.org/content/dam/redcross/get-help/pdfs/disasters-and-financial-planning-guide.PDF>

### Information for Where You Live

- Osceola County – <http://www.osceola.org/agencies-departments/emergency-management/hurricane-center/>
- Orange County – <http://www.orangecountyfl.net/EmergencySafety.aspx>
- Seminole County – <http://www.seminolecountyfl.gov/departments-services/county-managers-office/prepare-seminole/>
- Lake County – [https://www.lakecountyfl.gov/offices/emergency\\_management/](https://www.lakecountyfl.gov/offices/emergency_management/)
- Polk County – <https://www.polk-county.net/emergency-management>
- PR Emergency Management Agency – <http://www.agencias.pr.gov/agencias/aemead/Pages/Contactos-de-Emergencias.aspx>
- American Red Cross Puerto Rico Chapter – <https://www.redcross.org/local/puerto-rico.html>
- American Red Cross Registry – Safe and Well - <https://safeandwell.communityos.org/cms/index.php>



FEMA



## Weather Stations/New Stations

\*You can follow these sites on Facebook/download apps to stay alert. Make sure to sign-up for all severe weather alerts (text message or email alerts)

- NOAA: <http://www.wpc.ncep.noaa.gov/#page=ovw>
- The Weather Channel: <https://weather.com/>
- Weather Underground: <https://www.wunderground.com/>
- CNN: <https://www.cnn.com/>
- Fox News: <http://www.foxnews.com/>
- Bay 9 News: <http://www.baynews9.com/fl/tampa>
- NBC News: <https://www.nbcnews.com/>

\*These are a few of many News Stations you can view

# WEATHER STATION

